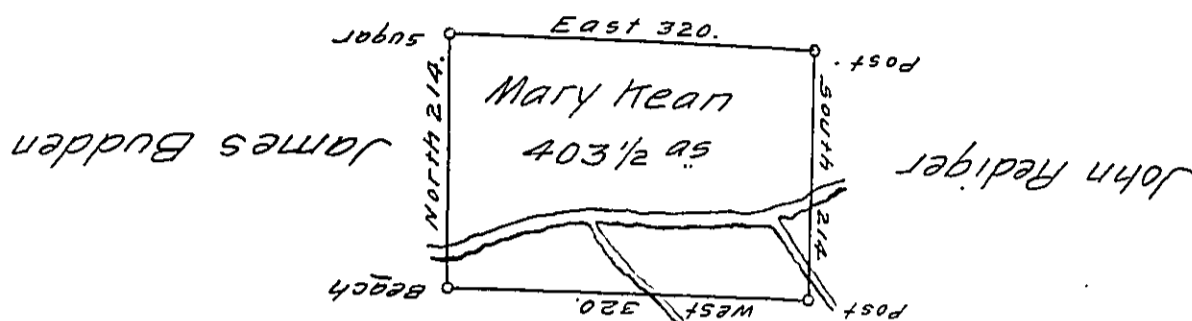


Reservation



Mary Hean

Situate on the Waters of Lake Erie in Allegheny County
 District No 1. Survey'd 10th June 1794 to Mary Hean on her
 Warrant dated 13th April. 1792. Containing Four hundred three
 Acres an half & allow^e

Dan^l Brodhead Esq^r }
 Surv. Gen^l

Tho^s Pees. D. S.

IN TESTIMONY that the above is a copy of the original remaining on file in
 the Department of Internal Affairs of Pennsylvania, made
 conformably to an Act of Assembly approved the 16th day of
 February, 1833, I have hereunto set my Hand and caused
 the Seal of said Department to be affixed at Harrisburg,
 this twentieth day of December 1911.

Henry Hoover
 Secretary of Internal Affairs.